

# Rules for Motorists

Driving on the roads requires care and courtesy whether you are driving a car or a bicycle. As motorists, we must respect the rights of other road users including bicyclists. Bicyclists fare best when they act and are treated as drivers of vehicles. Do your part by being a safe and courteous driver. Below are a few driving rules for your review.



**Thanks for your help!**

## Bicyclists have the same rights and responsibilities as drivers of motor vehicles.

Efforts are being taken to educate all bicyclists that they too must obey the rules of the road. As a motorist you should drive carefully around a bicyclist because the slightest mistake by you or the bicyclist can result in death.

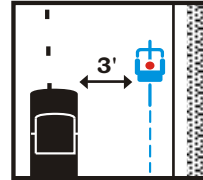


The biggest differences between bicyclists and motorists as road users is that bicycles are less visible, quieter, and don't have a crumple zone around them. *Always be aware of bicyclists* that may be on the road. Here are some guidelines to help you share the road with bicyclists.



**In bad weather**, give bicyclists extra trailing and passing room, just as you would other motorists.

**When uncertain** in any situation, **SLOW DOWN** until it is safe to pass.



**Give at least three feet** of passing space between the right side of your vehicle and a bicyclist just as you would with a slow-moving vehicle.

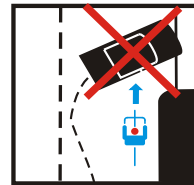


**Reduce your speed** when passing bicyclists, especially if the roadway is narrow.

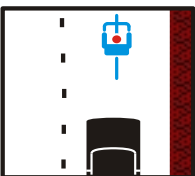
**After passing a bicyclist on your right**, check over your shoulder to make sure you have allowed enough room before moving over. Experienced bicyclists often ride 25-30 mph and may be closer than you think.



**Don't blast your horn** when approaching bicyclists - you could startle them and cause an accident.

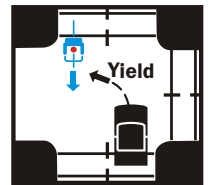


**Do not pass bicyclists** if you will be making a right hand turn immediately afterward. Always assume bicyclists are traveling through unless they signal otherwise.

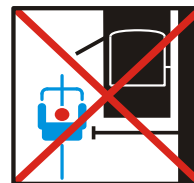
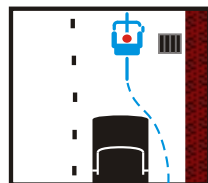


**When a road is too narrow** for cars and bikes to ride safely side by side, bicycles should "take the travel lane," which means riding in or near the center of the lane.

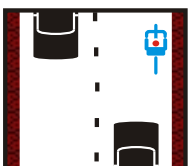
**When turning left at an intersection**, yield to oncoming bicyclists just as you would yield to oncoming motorists.



**Recognize situations and obstacles** which may be hazardous to cyclists, such as potholes, debris, and drain gates. Give bicyclists adequate space to maneuver.



**Before opening your car door**, look for bicyclists who may be approaching.



**Do NOT pass bicyclists** if oncoming traffic is near. Wait as you would with any slow-moving vehicle. Your patience will only take a few seconds and can help prevent a serious crash or worse.

**Children on bicycles** are often unpredictable -- *expect the unexpected!*



Thanks to the Bicycle Coalition of Maine for giving us permission to use their graphics and information.